

MICHI

SKYMASTER
SN15B

**WITH IMPROVED SAFETY AND
MANEUVERABILITY, EQUIPPED
WITH CAPABILITY FOR NEW
TECHNOLOGY.**

**FOR CONTRIBUTION OF YOUR
SATISFIED WORK ENVIRONMENT...**



CENTRALIZED LOWER CONTROL SYSTEM

The function of Jack operation, Lower operation device and AMCS Monitor are available at the centralized lower control system.

It's easier to access to each devices from ground position.



Joy stick controller with Enable switch

Joy Stick will supply you a high efficiency and operability.
Multiple operations, like Elevating + Extending of the boom can be accessed by one hand. In addition Enable Function prevents a accident by mis-operation.



Upper Control Device



"Arm Operation" and "Swing Operation" apply for "Solenoid proposal control device".
Improved operational environment.

Bucket Slide & Operation System

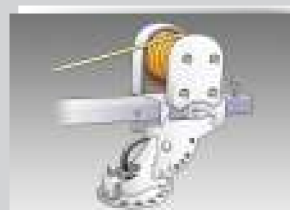


Bucket loading capacity is 200kg, the swing controlled by hydraulic system.

Bucket moves to raise and lower vertically by 500mm.

Hydraulic Winch

Hydraulic winch can operate hoisting, rotateting and elevating by each isolated lever.



SAFETY DEVICES

BUCKET AUTOMATIC STOWAGE INTERLOCK SYSTEM



Jack Operation is available when the bucket is stowed on the correct position.



BOOM-BUCKET INTERFERENCE AVOIDANCE SYSTEM



Bucket-Boom Interference Avoidance System prevents collision boom and bucket.



OPTIONAL DEVICES

HYDRAULIC BOOSTER

Baloon operation type



Operation device connector



OPTIONAL SAFETY DEVICES

CONTROL BOX ILLUMINATION



The Control Box Illumination can supply for both Upper and Lower to light up the control panel in the dark.

FRP TOOL BOX



The FRP tool box is for hanging on the edge of the Bucket.
Inner dimension :
Approx. 495 x 220 x 300(mm)

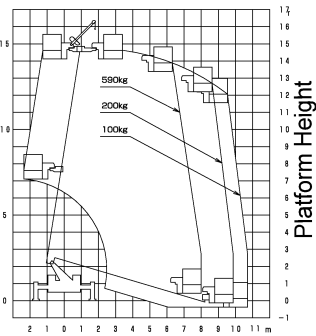
JACK MARKER LAMP



The Jack Marker Lamp is installed on each jack and goes on when the boom is stowed on the boom rest and blinks when the boom is raised from the boom rest

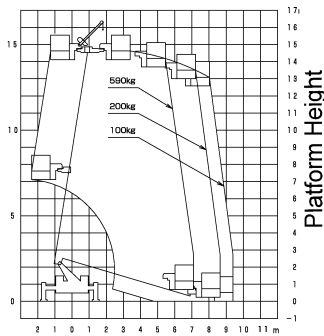
Work Range Diagram

Outriggers Width (Max)
3300~3350mm

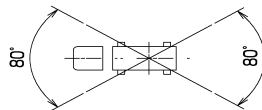


Working Radius

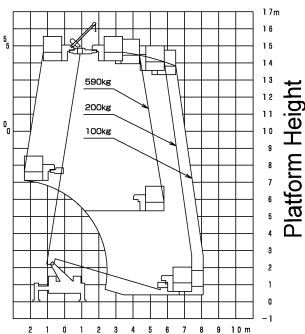
Outriggers Width (Mid 2)
2800~3300mm



Working Radius

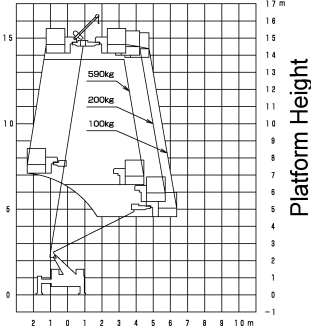


Outriggers Width (Mid 1)
2300~2800mm

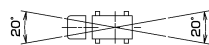
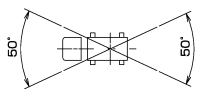


Working Radius

Outriggers Width (Min)
1710~2300mm



Working Radius



MODEL	SN15B
LIVE LINE WORK APPARATUS	Between bucket liner & ground with 3 rd Boom extend by 0.5m for 35 kv line voltage
LIVE VOLTAGE	35kv
BUCKET	
RATED LOAD	200kg or two persons
MAX. FLOOR HEIGHT	14.6m (Including 0.5m bucket Slide)
MAX. OUTREACH	10.7m with outrigger fully extended and the bucket load with 100kg.
MATERIAL	FRP
WITHSTAND VOLTAGE	20kv/5min.
INNER DIMENSION	0.73 x 1.05 x 0.9 (m) / (L x W x H)
BUCKET SWING	L:120 deg, R:120 deg.
ARM LENGTH	850mm
ROTATION ANGLE	L:125 deg, R:125deg.
BUCKET LINER	
MATERIAL	Polyethylene
WITHSTAND VOLTAGE	20kv/5min.
INNER DIMENSION	0.68 x 1.01 x 0.9(m) / (L x W x H)
WINCH & SUB-BOOM	
HOISTING CAPACITY	490kg
HOISTING HEIGHT	16.2 m (Elevation Angle: 60 deg.)
ROPE SPEED	35m / min.
SUB BOOM MATERIAL	FRP
BOOM	
THE 3rd BOOM MATERIAL	FRP
THE 3rd BOOM INSULATION	100kv/min.
LENGTH	5.265 – 12.465(m)
EXTENSION SPEED	7.20m/33s(Up), 7.20m/25s(Down)
ELEVATION ANGLE	-16.5~81deg.
ELEVATION SPEED	-16.5~81deg./35s (Up) -16.5~81deg./30s (Down)
ROTATION ANGLE	360 degrees continuous
ROTATION SPEED	1.2rpm
OUTRIGGER	
Outrigger Width	1.71~3.35m
SAFETY DEVICES:	
Hydraulic Safety Devices (Relief valve, Pilot check valves on jack cylinders, Holding valves on Elevation and Extension cylinders, Bucket leveling system), Emergency Stop Switch, AMCS, AMCS monitor, Jack-boom interlock system, Pre-programmed cabin and toolbox avoidance system, Anchor for safety belt, Starting check-up switch, Joy Stick Lever with Enable function, Bucket stowage interlock, Bucket-Boom interference avoidance system	
OTHER DEVICES:	
Hyd.sub-boom, Slide Bucket, Upper Hydraulic Outlet, Earth Reel, Upper Battery Charging Device, Level Gage, Cone Bracket, Liner Protector, Engine Start-Stop Swtich, Boom bucket automatic stowage system	
STANDARD ACCESSORIES:	
Jack Base (4pcs), Wheel Chock (4pcs), Working light,(1pc), Bucket Cover, Winch Cover, Standard-Tool set (1set)	
SPECIAL OPTIONS:	
Upper Booster, Control Panel Illumination, FRP tool-box	